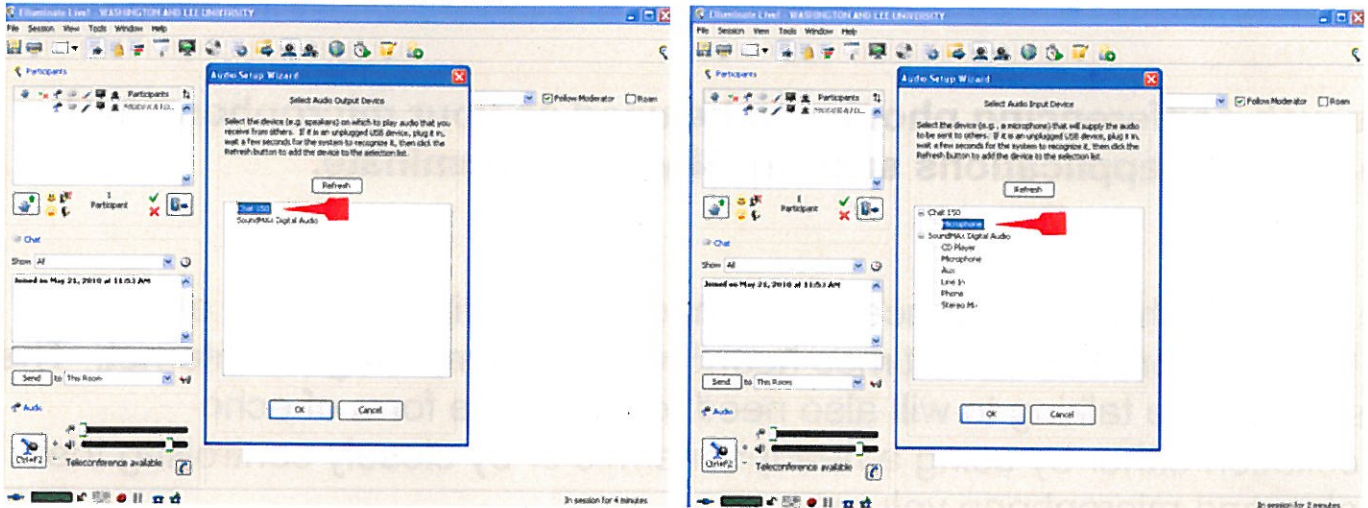


Using the Clear One with Elluminate

1. Plug the microphone into a USB jack on the PC. Device should automatically be added.
2. Use the Elluminate link to open software
3. Go to Tools, Audio, Audio Setup Wizard
4. Follow the Wizard instructions and choose the Chat 150 on the screens indicated below.
5. The Clear One Chat 150 will serve as both your speaker and microphone reducing the chances of feedback or echo.



Using the Clear One with Skype

1. Plug the microphone into a USB jack on the PC. Device should automatically be added.
2. Open Skype and sign in
3. Go to Tools, Options, Audio Settings
4. Be sure both the Microphone and the Speakers show the Chat 150
5. The Clear One Chat 150 will serve as both your speaker and microphone reducing the chances of feedback or echo.

